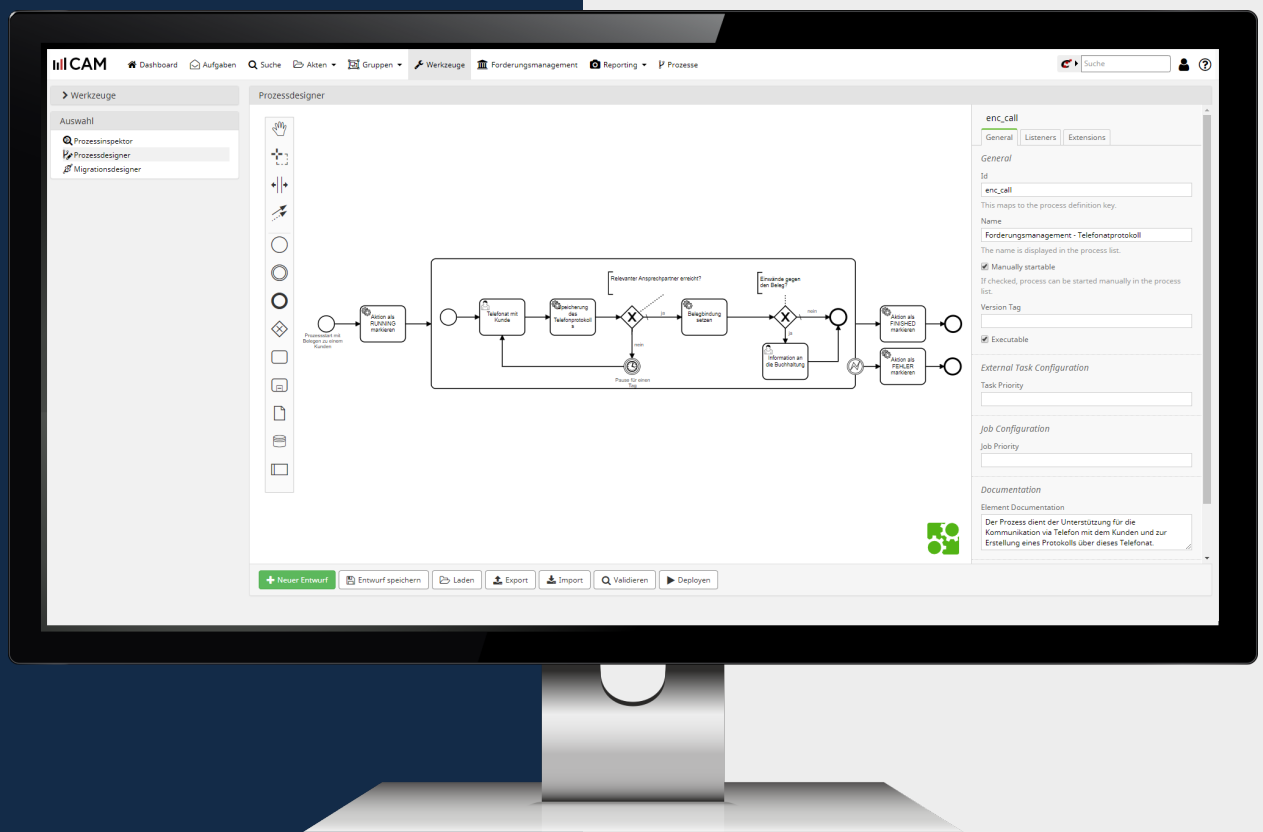


Adapting CAM to Your Own Needs

BPMN, DMN and FORMS - the three tools with which you can set up CAM so that the software suits you perfectly!



How Users are Able to Modify CAM themselves so that it Meets their Requirements

Configuration over coding – this is our motto. We want you to be able to adapt your system yourself to meet new requirements or react to changing situations! For this reason, you are able to modify processes in your CAM, add new forms and update your automatic decision-making procedures. Without programming knowledge or additional costs, you can configure CAM yourself so that it always supports you optimally in your work.

FORMS

With forms, the answers to questions or particular relevant information can be collected and stored. The **Form Designer** in CAM makes it possible to develop such forms, save them for later use and change them when necessary. Forms can be created in the system for various purposes and their entries can be used, for example, to control automatic processes or decision-making.

The Form Designer has diverse functions for maximum user comfort, e.g. mandatory entries, language

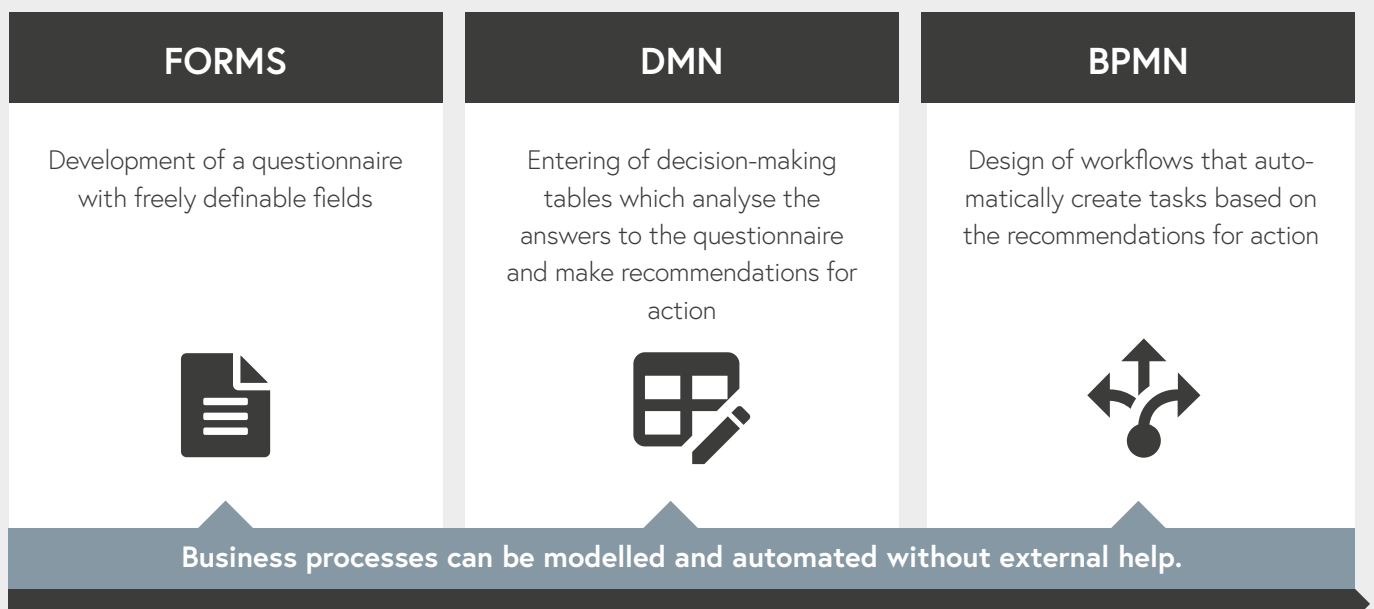
versions, drag & drop for the design, rules for data entry, the stipulation of a currency and much more. You can, of course, view your self-designed form in a live preview before you publish it.

DMN

Countless business decisions are made daily. Many of these decisions can be represented using the **DMN (Decision Model and Notation) standard** via intuitively understandable decision-making tables. CAM provides you with your own Designer, with which you can have automated decisions made, always with identical rules.

EXAMPLE:

Using a new questionnaire form, customer information is to be collected regularly, the results automatically evaluated and recommendations for action created based on the information.



Easily understandable tables are used to control which conditions produce which specific result. Combinations of values are thereby possible. It can always be seen in the table which decision was made and why, and the corresponding rule can be modified at any time. This enables complete transparency and efficient adaptation to new situations.

BPMN

Workflows are the working procedures of your company, which consist of individual activities, i.e. tasks. With the workflow management system that is integrated into CAM you can represent these procedures 1:1 as processes in CAM and can manage and control them. Suitable process definitions can be created in **BPMN (Business Process Model and Notation)** format.

Each process consists of a linkage of various tasks that can be as complex as required. These tasks can be either for manual completion or automatically performable. Processes can also be started either manually or automatically depending on the preceding events. So, for instance, customers are monitored in CAM continuously and automatically; if relevant information becomes available, the system starts a process that has been set up and, for example, informs the responsible user.

Your Benefits through Configuration in CAM

- ✓ Adapt your processes yourself
- ✓ No programming, no additional costs
- ✓ You can react quickly and flexibly to changes at any time
- ✓ The system always supports your processes and your day-to-day work optimally
- ✓ Decisions are transparent and can be reviewed at any time



Do you want to experience for yourself how simply and quickly CAM can be configured? Get in touch with us and arrange a **live demo via web session!**

Configuration in CAM

FORMS

Create and edit forms



DMN

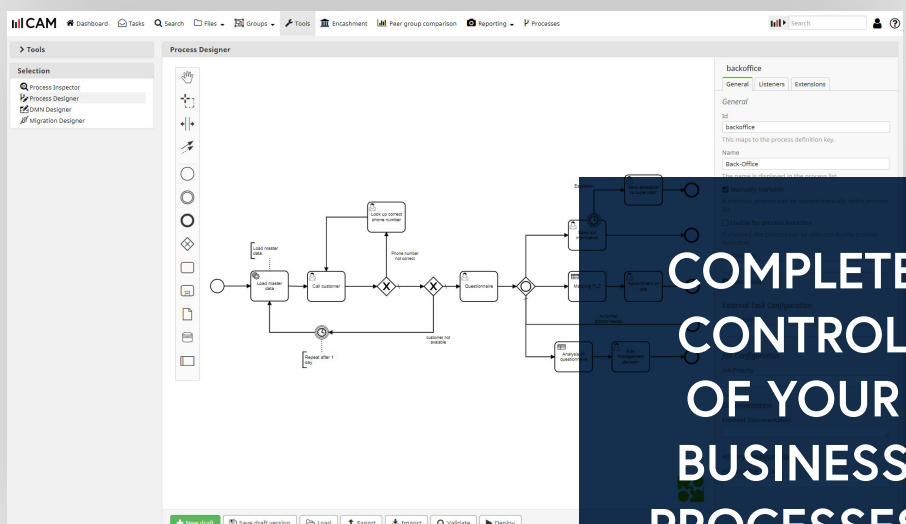
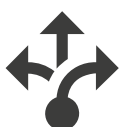
Set up and modify decision-making tables



	Input				Output		
	Short-time	Revenue	Gov. support	Insolvency	Suggestion		Annotation
1	Short-time	Revenue	Gov. support	Insolvency	Suggestion		
2	Long	Long	Long	string	string		
3	[0,0.1]	-	-	"yes"	"Insolvency"	-	
4	[0,0.1]	-	-	"no"	"Small risk of revenue reduction"	-	
5	[0,0.1]	-	-	"no"	"Check current revenue situation in 4 weeks"	-	
6	[0,0.1]	-	-	"no"	"High risk of insufficient creditworthiness"	-	
7	[0,0.1]	-	-	"no"	"High risk of short-time work"	-	
8	[0,0.1]	-	-	"no"	"No further actions needed"	-	

BPMN

Create and update processes and tasks



**COMPLETE
CONTROL
OF YOUR
BUSINESS
PROCESSES.**



Enabling Success.

SCHUMANN
Jutta-Limbach-Str. 1
37073 Göttingen, Germany

+49 (0)551 383 15 - 0
info@prof-schumann.de
www.prof-schumann.com